

# CHISON

Value Beyond Imaging



## ***i8 VET***

[WWW.CHISON.COM](http://WWW.CHISON.COM)



- ◎ **19" high definition LCD monitor**  
High quality LCD monitor ensure clear image visualization and high contrast.
- ◎ **4 probe connectors**  
Four probes connected to system allow fast selection and activation versatile extended range of applications
- ◎ **Superb latest advanced technology**  
THI(Tissue Harmonic Imaging) , Speckle Reduction Algorithm(SRA) ,Compound imaging , i-image, Multi-beam former, trapezoid imaging
- ◎ **Excellent performance with Proprietary function**  
B/BC mode ,Triplex, Quadplex ,PW auto-trace in real time ,Super needle ,2D steer
- ◎ **Dedicated veterinary software**  
Dedicated veterinary preset, veterinary calculation package , veterinary body mark
- ◎ **intelligent work-flow**  
one-key optimization ; one-key measure; one-key save; one-key print; one-key review;  
one-key upgrade ;User defined for preset, measurement & report ; Hot key free setting
- ◎ **Complete cardiac package**  
CW, HPRF, TDI, Color M mode, Steer M mode
- ◎ **18Mhz high frequency linear probe**  
Provide superb image for superficial tissue & small pets
- ◎ **Fast speed and convenient DICOM**  
DICOM work-list, storage, print , transfer, structure report





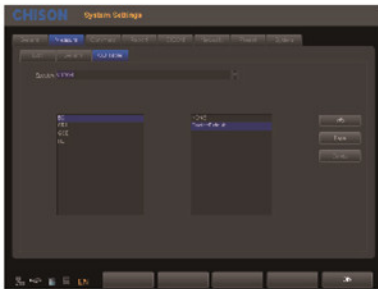
# 18MHz Linear Probe

Provide great image for superficial tissue & small pets



# Streamlined Workflow

The multi-purpose user presets, comprehensive measurement & report system, built-in EasyView image archive system, quick image storage/retrieve/transfer, one-button direct print, makes the complete workflow better than what you can dream of.



Various Measurements



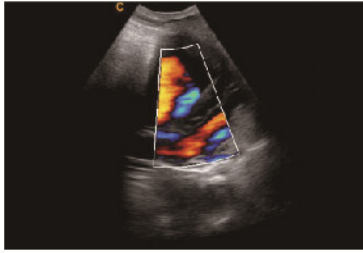
Detailed Reports



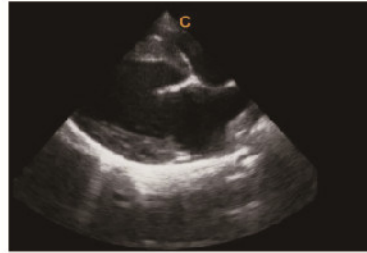
EasyView image archive system



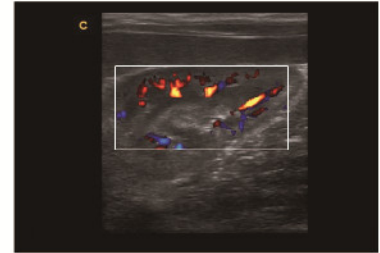
## Premium Image Quality



Canine Cardiac, C mode



Canine Cardiac, B mode



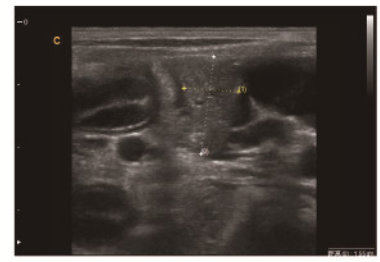
Canine kidney, C mode



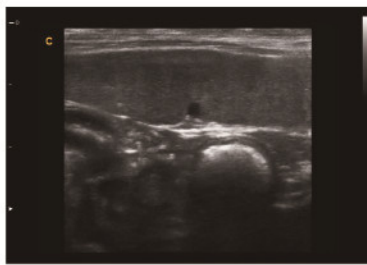
Canine Bladder, B mode



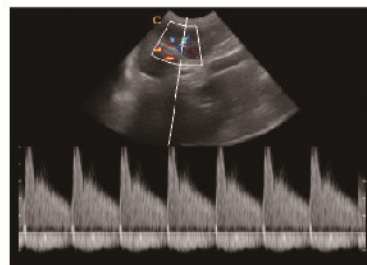
Canine liver, B mode



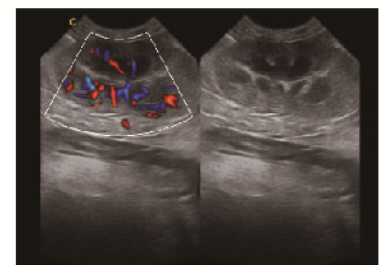
Canine Pancrea, B mode



Canine Spleen, B mode



Canine Kidney, D mode



Canine Kidney, B/BC mode

## Wide Range of Probe Selection



2.5MHz-6.4MHz Micro-Convex  
D3C20L



4.0MHz-10.7MHz Micro-Convex  
D6C15L



3.5MHz-8.0MHz Micro-Convex  
D5C20L



5.0MHz-10.0MHz Linear  
D7L40L



7.0MHz-18.0MHz Llinear  
D12L40L



2.5MHz-4.0MHz Phased array  
D3P64L



4.0MHz-9.6MHz Phased array  
D6P64L



2.5MHz-5.3MHz Convex  
D3C60L



4.0MHz-10.0MHz Linear Rectal  
D7L50L-A

## CHISON MEDICAL IMAGING CO., LTD.

### Sales & Service Contact Address:

No. 9 Xin Hui Huan Road, New District, Wuxi, Jiang Su Province, China214028

TEL: 0086-510-85310593 / 85310937 FAX: 0086-510-85310726 EMAIL: export@chison.com.cn

We reserve the right to make changes to this catalogue without prior notice  
Please contact our local dealer for the latest information.

Ei8vet150922